



# Growing Reefs Protecting Coastlines



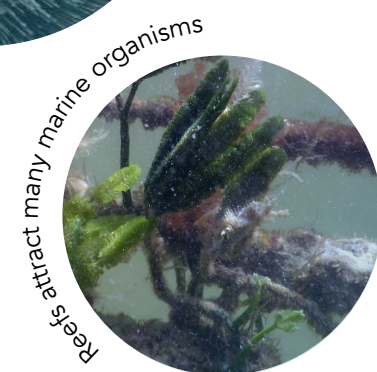
## Ecological Coastal Management

Axisima and CCell have formed a strong partnership within the Central and Latin American regions to deliver affordable and ecological coastal management. This involves submerged breakwater reefs that offer long-term coastal protection to bring sand back to your coastline.

Our living reefs integrate with nature to mitigate the impact of coastal erosion from stronger waves triggered by climate change.

CCell Sense, our remote marine data collection system helps to cultivate an ideal environment for resilient reef-building organisms and lets us monitor these vulnerable ecosystems.

It is time to listen to our oceans.

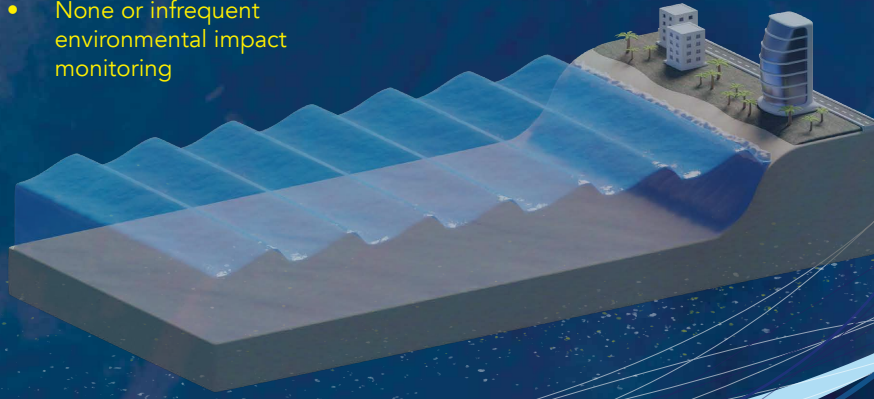


### KEY FEATURES:

- Nature-based, long-term coastal protection
- Nearshore marine data collection with **CCell Sense**
- Rapid deployment of reefs
- A fraction of the cost of traditional seawalls - with added ecological benefit
- Reef conservation and community awareness with local ocean ambassadors

### BEFORE:

- Strong waves
- Coastal erosion
- Barren seabed
- None or infrequent environmental impact monitoring

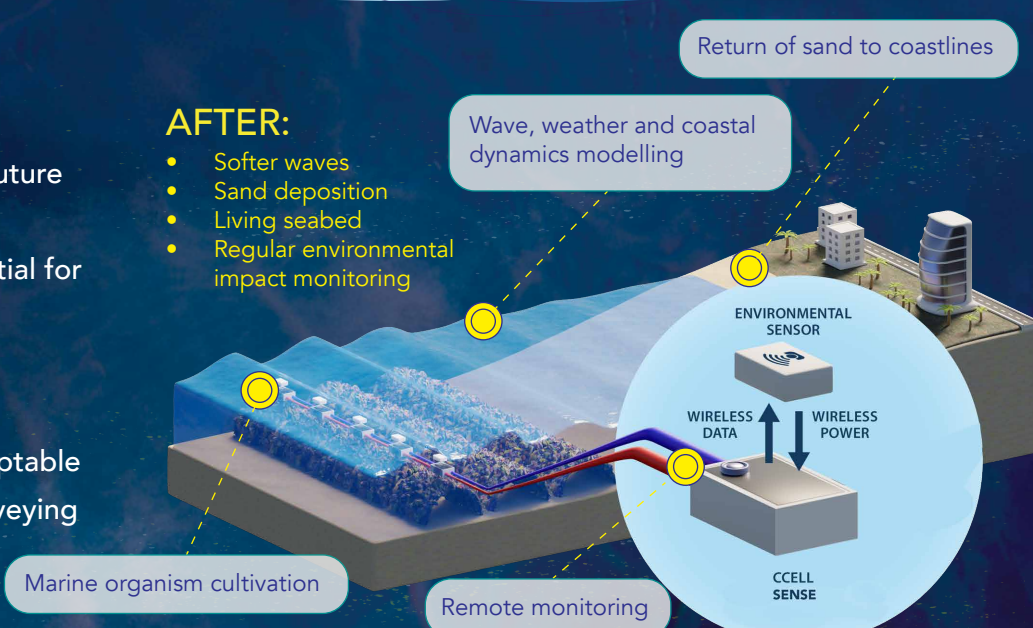


### ADVANTAGES:

- Preservation of coastlines for future generations
- Carbon positive system, potential for blue carbon sequestration with seagrass
- Regain local natural capital
- Affordable, accessible and adaptable technology with continued surveying and monitoring support.

### AFTER:

- Softer waves
- Sand deposition
- Living seabed
- Regular environmental impact monitoring



Follow our journey:



@ccelluk  
@axisima